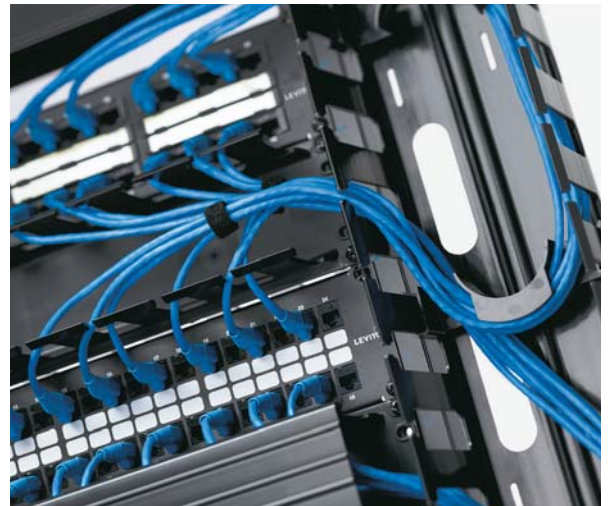


# Networks for Health Care Facilities

Connecting caregivers, researchers, and patients





## A Reliable Network is **Mission Critical**

Quality health care relies on **critical information** from technologies such as patient monitoring equipment, digital imaging, intelligent beds, wireless devices, and more. These solutions require flexible and reliable structured cabling systems that can scale to handle growing demands for network speed and bandwidth.

Leviton is dedicated to ensuring caregivers, researchers, and patients are always connected. From the operating room to the data center, our robust fiber, copper, and AV systems are interoperable with the latest network equipment and devices, and will prepare you for future network demands.

And with every Leviton installation you get responsive technical service and infrastructure experts who know the ins-and-outs of health care IT standards such as TIA-1179 and HIPAA compliance. Add the peace-of-mind that comes from the best warranty available, and you can expect the highest return on your infrastructure investment.



### **LEADING FACILITIES CHOOSE LEVITON**

#### **THE TEMPLE UNIVERSITY HEALTH SYSTEM**

With more than 1,000 physicians and scientists, this \$1.4 billion academic health system serves the health needs of the greater Philadelphia population. To prepare the University and Health System for future network demands, Temple constructed a new joint data center (JDC). Temple wanted fast server cabinet deployment and the lowest achievable channel loss in order to migrate from 10G to 40G and eventually 100G Ethernet. Temple chose Leviton's laser-optimized multimode (LOMM) fiber trunks, high-density MTP® patch panels, and rack-mount enclosures.



## Connecting Every Area of the Facility

Once a hospital starts receiving patients it becomes a 24/7 operation, and disruptions for cabling upgrades create a negative impact on the workflow. That is why these facilities install long-lasting technologies that are flexible and scalable.

Category 6A cabling offers the best solution for hospitals seeking system longevity, faster data transfer, and support for high-bandwidth wireless networks. It can support network speeds of 10 Gigabits per second, which dramatically reduces the time it takes to access information such as medical images, translating into more efficient diagnosis and collaboration. For these reasons it is the recommended cabling system in the TIA-1179 standard for health care facilities.

Leviton Cat 6A systems have been independently verified to deliver the highest performance margin available. And our shielded systems include patented signal isolation technologies to protect your network from EMI/RFI — especially important in areas such as exam rooms, laboratories, and imaging environments.

## Preparing Data Centers and Telecom Rooms for Future Demand

In order to meet the bandwidth demands from services and clients, more health care CIOs are looking to 10G, 25G, 40G, and even 100G Ethernet.

Leviton fiber systems make it easy to migrate to higher bandwidth applications. Trunk cables, harnesses, patch cords, and cassettes are available in laser-optimized multimode, and give data centers greater flexibility in patching density and cabling reach.



## Supporting Patients and Staff at the Point of Care

Health care IT standards recommend high-density connectivity for areas like nurse stations, patient suites, and emergency rooms, allowing quick and easy access to networks in a small amount of space. Leviton supports caregivers and patients with a large selection of durable AV and data connectors, patch cords and signal extenders. And our high-density wallplates allow for more connections in a smaller footprint.

### INOVA HEALTH SYSTEM

Inova is constructing a 660,000-square-foot joint women's/children's hospital at its Fairfax, Virginia medical campus. For its networks, Inova chose Leviton QuickPort® connectivity for more than 13,000 drops of Category 6 cable, as it exceeded performance standards for 1 GbE systems. QuickPort connectors use a patented retention force technology that protects tines from damage and adds longevity to the connection. The connectors are loaded in Leviton high-density QuickPort patch panels in the hospital's telecom rooms.

### MULTICARE HEALTH SYSTEM

One of the Pacific Northwest's most progressive health care organizations, MultiCare Health System provides leading-edge care for virtually every health need. Leviton's copper and fiber solutions — installed in multiple facilities throughout the organization, including Mary Bridge Children's Hospital and Tacoma General Hospital — provide the solid network foundation to support it all, from outpatient surgery to urgent care.

# THE SMART CHOICE FOR A BETTER NETWORK

High-performance connectivity backed by  
the industry's best service and support

We invent the industry's best technologies. We build them to last. And we stand behind every product and every installation – delivering industry-leading performance and unbeatable service and support – throughout the life of your structured cabling system. Add in the peace of mind that comes from working with a stable, century-old supplier and you get far and away the highest return on infrastructure investment.

## Leviton Network Solutions Division Headquarters

[leviton.com/networksolutions](http://leviton.com/networksolutions)  
2222-222nd Street S.E., Bothell, WA 98021 USA

### Inside Sales

T 800.722.2082  
E [insidesales@leviton.com](mailto:insidesales@leviton.com)

### Technical Support

T 800.824.3005 / +1.425.486.2222  
E [appeng@leviton.com](mailto:appeng@leviton.com)

## Leviton Corporate Headquarters

[leviton.com](http://leviton.com)  
201 N. Service Road, Melville, NY 11747 USA

### Customer Service

T 800.323.8920 / +1.631.812.6000  
E [customerservice@leviton.com](mailto:customerservice@leviton.com)

### International Inside Sales

T +1.425.486.2222  
E [intl@leviton.com](mailto:intl@leviton.com)

## Leviton International Offices

### Asia / Pacific

T +1.631.812.6228  
E [infoasean@leviton.com](mailto:infoasean@leviton.com)

### India / SAARC

T +971.4.886.4722  
E [infoindia@leviton.com](mailto:infoindia@leviton.com)

### Caribbean

T +1.954.593.1896  
E [infocaribbean@leviton.com](mailto:infocaribbean@leviton.com)

### Mexico

T +52.55.5082.1040  
E [lsamarketing@leviton.com](mailto:lsamarketing@leviton.com)

### Canada

T +1.514.954.1840  
E [pcservice@leviton.com](mailto:pcservice@leviton.com)

### Latin America

T +52.55.5082.1040  
E [lsamarketing@leviton.com](mailto:lsamarketing@leviton.com)

### China

T +852.2774.9876  
E [infochina@leviton.com](mailto:infochina@leviton.com)

### Middle East & Africa

T +971.4.886.4722  
E [lmeinfo@leviton.com](mailto:lmeinfo@leviton.com)

### Colombia

T +57.1.743.6045  
E [infocolombia@leviton.com](mailto:infocolombia@leviton.com)

### South Korea

T +82.2.3273.9963  
E [infokorea@leviton.com](mailto:infokorea@leviton.com)

### Europe

T +33.6.8869.1380  
E [infoeurope@leviton.com](mailto:infoeurope@leviton.com)

## All Other International Inquiries

E [international@leviton.com](mailto:international@leviton.com)

